



Environment Agency

JBA
consulting

The River Irwell Catchment Restoration

Oliver Southgate (EA) and Sebastian Bentley (JBA)

12-09-2013

North West RBMP



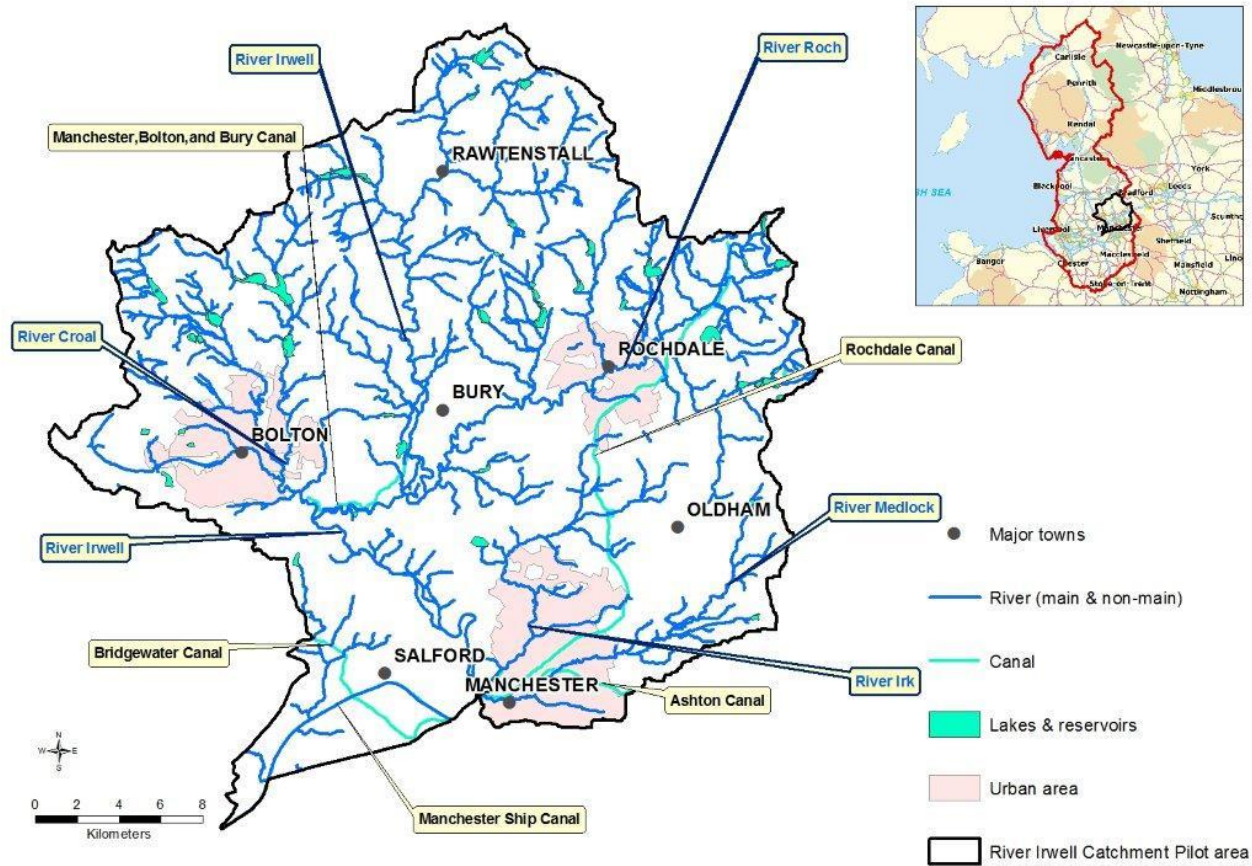
North West RBMP

- ➔ Water has played a significant part in the growth of north-west cities through historic manufacturing.
- ➔ This has left a legacy of poor water quality, heavily modified rivers, poor habitat diversity, diffuse pollution, abstraction and flow regulation.
- ➔ As a result, only 30% of existing surface water bodies are at a good ecological status / potential (2009) within the RBMP.



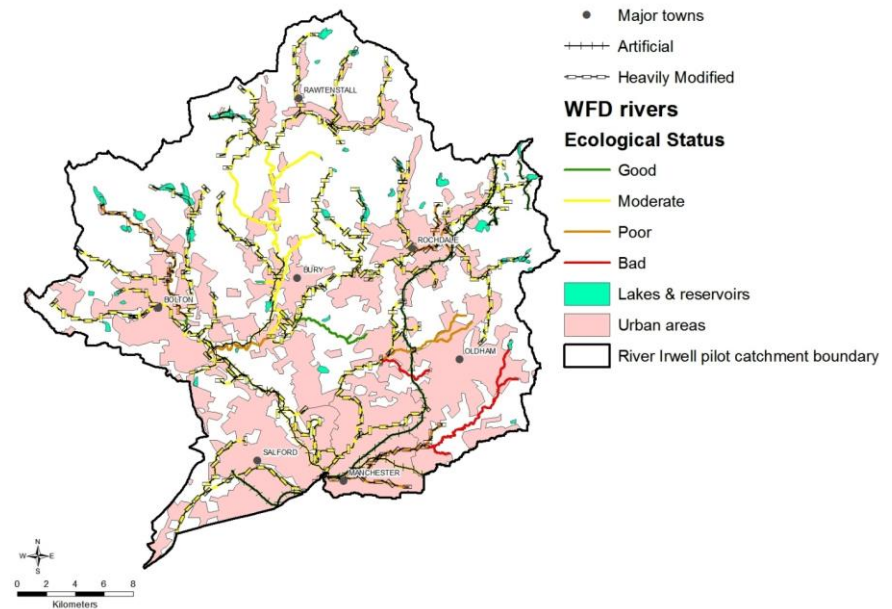
Irwell Good Ecological Potential Project

Irwell Project



Irwell Project

- ➔ The Irwell at its source is rural, becoming urbanised further south as it flows through the towns of Bolton, Bury, Salford, Oldham and Manchester, resulting in significant physical modification to the rivers.
- ➔ Issues in achieving good status / potential – barriers; flood risk; funding; urbanisation
- ➔ Current successes of the Pilot – engagement of stakeholders and water users (e.g. Rivers Trusts); impoundment removal



Barrier Removal

- ➔ 17 weir removals complete in 2 years
- ➔ UK lead for undertaking this type of restoration



Prestolee weir

Barrier Removal



Goshan weir

Communication and Engagement

- ➔ Conferences
- ➔ Workshops – recent weir removal
- ➔ Restoration learning hubs
- ➔ River corridor walkovers
- ➔ River models
- ➔ ‘Teach the teacher’

